



Environment and
Climate Change Canada
Canadian Wildlife Service

Environnement et
Changement climatique Canada
Service canadien de la faune



Ducks Unlimited Canada

Annual British Columbia Conservation Areas Summary Report 2015

British Columbia NGO Conservation Areas
Database Technical Working Group

August 16, 2016



About the BC NGO Conservation Areas Database:

Conservation partners have collaborated for a number of years as part of the British Columbia Non-governmental Organization (BC NGO) Conservation Areas Database Working Group to develop a comprehensive, standardized inventory of British Columbia's non-governmental conservation areas (also known as private conservation lands). These areas include properties designated as Fee Simple, Registerable Interests, and Unregisterable Interests and complement the inventories created by the Federal and Provincial Governments for federal and provincial protected areas. The BC NGO Conservation Areas Database was developed from cadastral mapping of legal parcels by local governments. The attributes of each conservation parcel were populated with information obtained from conservation partners as well as by searching land titles.

Fee Simple is defined as ownership of the title to a legal parcel. Registerable Interests are non-Fee Simple conservation securements registered on title, specifically conservation covenants and leases. Conservation covenants are a voluntary and legally binding interest on all or a portion of a legal parcel. The title is retained by the landowner, but the covenant and covenant holder (e.g. conservation organization) are registered on the title and bind the current and future owners of the parcel in how the land is used. Leased lands are managed for conservation similar to Fee Simple properties and are usually long term. There are some leases which are not registered on title and have not been included in the conservation areas data.

Unregisterable Interests are conservation securements not registered on title. These are primarily conservation agreements but include other types of agreements as well. Conservation Agreements are voluntary arrangements with land owners to manage the land, or a portion of the land, with a particular objective. Importantly, overlapping ownership and/or management arrangements can occur on a single legal parcel. For instance, the purchase of a Fee Simple parcel may have been cost-shared with two or more conservation organizations who are all registered on the title. This same parcel may also have a conservation covenant registered and held by another organization.

Technical development of the database is led by the Technical Working Group, namely Ducks Unlimited Canada, The Nature Trust of British Columbia and the Canadian Wildlife Service of Environment Canada. Project direction and coordination is led by the General Working Group members, which in addition to the Technical Working Group includes the Nature Conservancy of Canada and The Land Trust Alliance of British Columbia. The conservation areas of nearly forty conservation organizations are included in the database. The conservation parcels are produced with the cooperation of the Integrated Cadastral Information Society, which is coordinating the development of a standardized legal parcel fabric among British Columbia's local governments, utilities, assessment office, land titles office, and the Provincial Government. Some small land trusts have chosen not to participate in this project. Their total conservation area currently amounts to 15 hectares and represents 16 properties. For the purposes of this database, securements held by the Islands Trust Fund Board have been included as NGO securements. As of the 2015 database update, local island trust committees have been included as Local Government organizations where they hold a secondary interest on a securement

primarily held by an NGO. Those securements with interest held only by a local trust committee have been removed from the database due to absence of NGO interest on these properties.

The Annual British Columbia Conservation Areas Summary provides the most accurate identification of total conservation area in BC. Since NGO conservation areas may overlap with some Provincial and Federal conservation areas, the calculation for the total area of conservation lands in BC removes this overlap. Although Regional and Municipal Parks also add to the conservation land in BC, these data were not in a format that could be easily included in the current totals and are intended to be included in future iterations of the Annual BC Conservation Areas Summary Report. Total NGO conservation lands represent 159,424 Ha as of December 31, 2015. Overlap representing multiple securements on a single property has been removed from this figure.

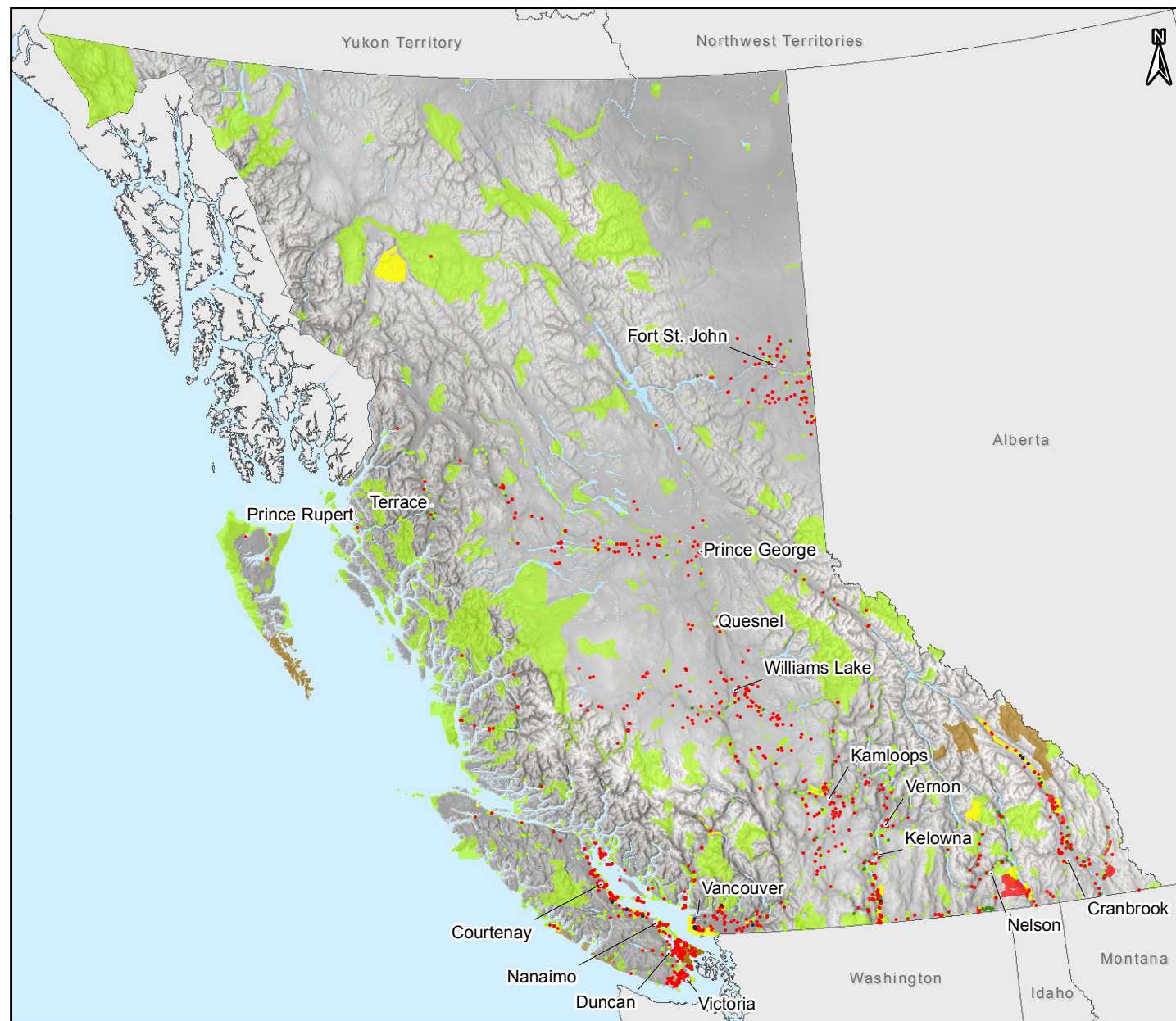
2015 Area Value Updates

The following changes to NGO securements in the BC NGO Conservation Areas Database occurred during 2015:

Securement Organizations	Change by Conservation Area Subtype			Change in Total Secured Area (ha)*	Reason for Change
	Fee Simple (ha)	Registered Interests (ha)	Unregistered Interests (ha)		
Cowichan Community Land Trust	0.0	+6.7	0.0	+6.7	New 2015 Registered Interest securement
Denman Conservancy Association	-1.8	0.0	0.0	0.0	Property subdivision and transfer
Ducks Unlimited Canada	+139.9	+23.7	-13,495.7	-13,332.1	New 2015 Fee Simple and Unregistered Interest securements; Spatial and attribute corrections to database; Removal of short-term agreements and grazing license from area values
Galiano Conservancy Association	+8.0	0.0	0.0	+8.0	Spatial correction to database
Habitat Acquisition Trust	0.0	+14.7	0.0	+14.7	New 2015 Registered Interest securement; Spatial corrections to database
Islands Trust Fund Board	+23.0	+25.0	0.0	+48.1	New 2015 Registered Interest securements; Spatial and attribute corrections to database
Nature Conservancy of Canada	+2,133.5	+4,761.9	0.0	+6,895.4	New 2015 Fee Simple and Registered Interest securements; Addition of pre-existing securements; Spatial and attribute corrections to database
Salt Spring Island Conservancy	+40.7	0.0	0.0	+40.7	Addition of pre-existing securement
Savary Island Land Trust Society	+18.9	0.0	0.0	+18.9	Addition of pre-existing securements
South Okanagan Rehabilitation Centre for Owls	+2.4	0.0	0.0	+2.4	Addition of pre-existing securement
The Land Conservancy of BC	-1,777.6	+1.1	0.0	-1,776.5	Property sales and transfers; Spatial and attribute corrections to database
The Nature Trust of British Columbia	+65.9	0.0	0.0	+65.9	New Fee Simple securements; Spatial corrections to database

*This figure represents overall change in area of all secured lands (Fee Simple, Registerable Interests, and Unregisterable Interests) for each Securement Organization. This figure will correspond with the difference seen between years in the values for total secured area located in the "Conservation Area by NGO Securement Organization" summary table on the last page of this report. Please refer to the "Conservation Area by NGO Securement Organization" summary table for a complete list of total secured areas by NGO current to 31 Dec 2015.

In addition to the above changes, the securement type for local island trust committees was changed from NGO to Local Government. This resulted in the removal of six properties representing 37 Ha of secured land held by the North Pender Island Local Trust Committee and the Galiano Island Local Trust Committee due to lack of NGO interest.



British Columbia Conservation Areas

Non-governmental Organization Conservation Areas

- Fee Simple, Covenants and Other Registered Interests on Title, Agreements and Other Unregistered Interests Not on Title*

Provincial Protected Areas

- Provincial Parks, Ecological Reserves, Recreation Areas, Protected Areas, and Conservancies
- Wildlife Management Areas
- Ministry of Forests, Lands, and Natural Resource Operations Acquisition, Lease, and Transfer of Administration and Control Lands

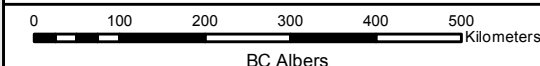
National Protected Areas

- National Parks
- National Wildlife Areas and other National Protected Areas

Points represent conservation areas that are less than 500 hectares; polygons represent those that are greater than 500 hectares.

Some points may be obscured by overlying points.

*Accuracy of some conservation areas has not yet been quality assured by respective securement organizations.



BC NGO Conservation Areas Database Technical Working Group:



Conservation Area Type	Conservation Area Subtype	Hectares	
Non-governmental Organization Conservation Areas	Fee Simple	103,931.1	As NGO conservation areas may contain overlapping ownership and/or management arrangements (eg subtypes), the calculation of "Total Area" of conservation lands in BC removes this overlap to provide a true conservation area value. Total NGO conservation area in BC is 159,424 Ha.
	Covenants and Other Registered Interests on Title	20,809.3	
	Agreements and Other Unregistered Interests Not on Title ¹	146,751.9	
Provincial Protected Areas	Provincial Parks, Ecological Reserves, Recreation Areas, Protected Areas, Conservancies ²	14,076,920.7	
	Wildlife Management Areas	251,351.0	1. The area value contains some uncertainty. It is sourced directly from respective securement organizations, Ducks Unlimited Canada and the Nature Conservancy of Canada.
	Ministry of Forests, Lands and Natural Resource Operations Administered Lands ³	22,761.5	2. The area value is derived from GIS data and may vary from published BC Parks numbers as these are based on legal size.
	National Parks	631,230.7	3. Consists of Acquisition, Lease, and Transfer of Administration and Control lands only. FLNRO WMA Leases are included with Wildlife Management Areas.
National Protected Areas	National Wildlife Areas and Other National Protected Areas (Canadian Wildlife Service)	3,060.0	4. Total Area may change as uncertainty is reduced for Agreements and Other Unregistered Interests Not on Title.
	Total Area⁴	15,228,893.7	

British Columbia Conservation Areas: Vancouver Island

Non-governmental Organization Conservation Areas

- Fee Simple
- Covenants and Other Registered Interests on Title
- Agreements and Other Unregistered Interests Not on Title*

Provincial Protected Areas

- Provincial Parks, Ecological Reserves, Recreation Areas, Protected Areas, and Conservancies
- Wildlife Management Areas
- Ministry of Forests, Lands and Natural Resource Operations Acquisition, Lease, and Transfer of Administration and Control Lands

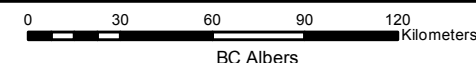
National Protected Areas

- National Parks
- National Wildlife Areas and other National Protected Areas
- Highways

Points represent conservation areas that are less than 500 hectares; polygons represent those that are greater than 500 hectares.

Some points may be obscured by overlying points.

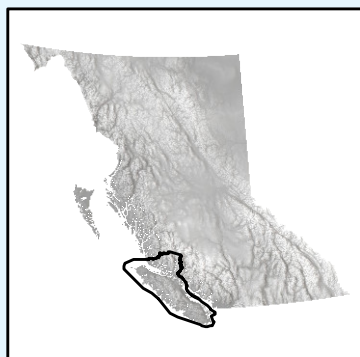
*Accuracy of some conservation areas has not yet been quality assured by respective securement organizations.



BC NGO Conservation Areas Database Technical Working Group:



Layer	Source
Non-governmental Organization Conservation Areas	British Columbia NGO Conservation Areas Database Technical Working Group, 2016. BC NGO Conservation Areas Database - Fee Simple, Registerable Interests, and Unregisterable Interests (secured as of Dec 31, 2015). [ESRI Personal Geodatabase]. Last updated Jul 19, 2016.
Provincial Protected Areas - Provincial Parks, Ecological Reserves, Recreation Areas, and Protected Areas	BCGOV FLNRO GeoBC. TANTALIS - BC Parks, Ecological Reserves, and Protected Areas. [ESRI File Geodatabase]. May 19, 2016.
Provincial Protected Areas - Conservancies	BCGOV FLNRO GeoBC. TANTALIS - Conservancy Areas. [ESRI File Geodatabase]. May 19, 2016.
Provincial Protected Areas - Wildlife Management Areas	BCGOV FLNRO GeoBC. Conservation Lands. [ESRI File Geodatabase]. May 19, 2016.
National Protected Areas - National Parks	CDNGOV Natural Resources Canada. National Parks - National Framework Canada Lands Administrative Boundaries Level 1. [ESRI File Geodatabase]. May 19, 2016.
National Protected Areas - National Wildlife Areas and other National Protected Areas	Environment Canada (Canadian Wildlife Service). CWS Protected Areas. [ESRI Shapefile]. June 07, 2012.
Region Boundaries	BCGOV ENV Knowledge Management Branch. ENV Regional Boundaries. [ESRI Shapefile]. June 07, 2012.
Lakes and Rivers	DataBC Geographic Services. Hillshade Imagery [WMS].
Multidirectional Hillshade Basemap	Sources: Esri, USGS, NGA, NASA, CGIAR, N Robinson, NCEAS, NLS, OS, NMA, Geodatasystem, Rijkswaterstaat, GSA, Geoland, FEMA, Intermap and the GIS user community. [ESRI Map Service].
1:50,000 DEM Basemap	CDNGOV Natural Resources Canada. Canada digital elevation data (1:50,000). [ESRI File Geodatabase]. 1997-1999.
Canada & USA Basemaps	CDNGOV Natural Resources Canada. Atlas of Canada National Scale Data 1:1,000,000. [ESRI Geodatabase]. 2015.



Washington



British Columbia Conservation Areas: Lower Mainland

Non-governmental Organization Conservation Areas

- Fee Simple
- Covenants and Other Registered Interests on Title
- Agreements and Other Unregistered Interests Not on Title*

Provincial Protected Areas

- Provincial Parks, Ecological Reserves, Recreation Areas, Protected Areas, and Conservancies
- Wildlife Management Areas
- Ministry of Forests, Lands and Natural Resource Operations Acquisition, Lease, and Transfer of Administration and Control Lands

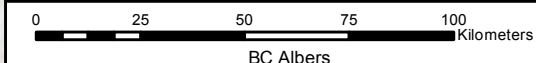
National Protected Areas

- National Parks
- National Wildlife Areas and other National Protected Areas
- Highways

Points represent conservation areas that are less than 500 hectares; polygons represent those that are greater than 500 hectares.

Some points may be obscured by overlying points.

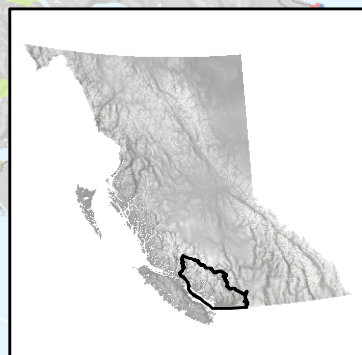
*Accuracy of some conservation areas has not yet been quality assured by respective securement organizations.

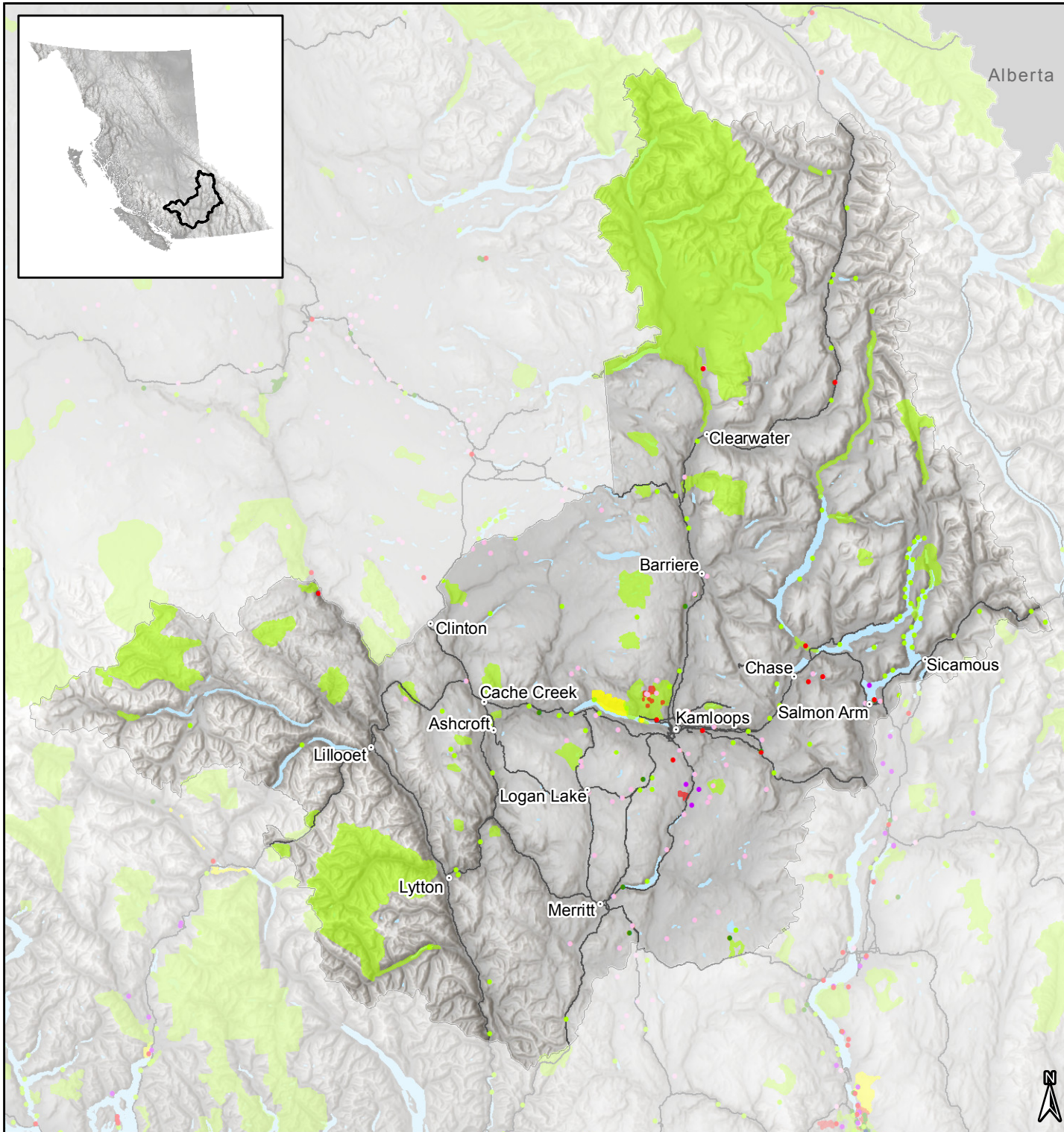


BC NGO Conservation Areas Database Technical Working Group:



Layer	Source
Non-governmental Organization Conservation Areas	British Columbia NGO Conservation Areas Database Technical Working Group, 2016; BC NGO Conservation Areas Database - Fee Simple, Registerable Interests, and Unregisterable Interests (secured as of Dec 31, 2015). [ESRI Personal Geodatabase]. Last updated Jul 19, 2016.
Provincial Protected Areas - Provincial Parks, Ecological Reserves, Recreation Areas, and Protected Areas	BCGOV FLNRO GeoBC. TANTALIS - BC Parks, Ecological Reserves, and Protected Areas. [ESRI File Geodatabase]. May 19, 2016.
Provincial Protected Areas - Conservancies	BCGOV FLNRO GeoBC. TANTALIS - Conservancy Areas. [ESRI File Geodatabase]. May 19, 2016.
Provincial Protected Areas - Wildlife Management Areas - Acquisition, Lease, and Transfer of Administration and Control Lands	BCGOV FLNRO GeoBC. Conservation Lands. [ESRI File Geodatabase]. May 19, 2016.
National Protected Areas - National Parks	CDNGOV Natural Resources Canada. National Parks - National Framework Canada Lands Administrative Boundaries Level 1. [ESRI File Geodatabase]. May 19, 2016.
National Protected Areas - National Wildlife Areas and other National Protected Areas	Environment Canada (Canadian Wildlife Service). CWS Protected Areas. [ESRI Shapefile]. June 2012.
Region Boundaries	BCGOV ENV Knowledge Management Branch. ENV Regional Boundaries. [ESRI Shapefile]. June 07, 2012.
Lakes and Rivers	DataBC Geographic Services. Hillshade Imagery (WMS).
Multidirectional Hillshade Basemap	Sources: Esri, USGS, NGA, NASA, CGIAR, N Robinson, NCEAS, NLS, OS, NMA, Geodatasysteem, Rijkswaterstaat, GSA, Geoland, FEMA, Intermap and the GIS user community. [ESRI Map Service].
1:50,000 DEM Basemap	CDNGOV Natural Resources Canada. Canada digital elevation data (1:50,000). [ESRI File Geodatabase]. 1997-1999.
Canada & USA Basemaps	CDNGOV Natural Resources Canada. Atlas of Canada National Scale Data 1:1,000,000. [ESRI Geodatabase]. 2015.





British Columbia Conservation Areas: Thompson

Non-governmental Organization Conservation Areas

- Fee Simple
- Covenants and Other Registered Interests on Title
- Agreements and Other Unregistered Interests Not on Title*

Provincial Protected Areas

- Provincial Parks, Ecological Reserves, Recreation Areas, Protected Areas, and Conservancies
- Wildlife Management Areas
- Ministry of Forests, Lands and Natural Resource Operations Acquisition, Lease, and Transfer of Administration and Control Lands

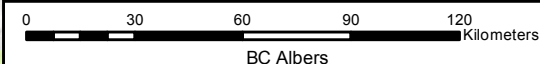
National Protected Areas

- National Parks
- National Wildlife Areas and other National Protected Areas
- Highways

Points represent conservation areas that are less than 500 hectares; polygons represent those that are greater than 500 hectares.

Some points may be obscured by overlying points.

*Accuracy of some conservation areas has not yet been quality assured by respective securement organizations.



BC NGO Conservation Areas Database Technical Working Group:



Layer	Source
Non-governmental Organization Conservation Areas	British Columbia NGO Conservation Areas Database Technical Working Group, 2016. BC NGO Conservation Areas Database - Fee Simple, Registerable Interests, and Unregisterable Interests (secured as of Dec 31, 2015). [ESRI Personal Geodatabase]. Last updated Jul 19, 2016.
Provincial Protected Areas - Provincial Parks, Ecological Reserves, Recreation Areas, and Protected Areas	BCGOV FLNRO GeoBC. TANTALIS - BC Parks, Ecological Reserves, and Protected Areas. [ESRI File Geodatabase]. May 19, 2016.
Provincial Protected Areas - Conservancies	BCGOV FLNRO GeoBC. TANTALIS - Conservancy Areas. [ESRI File Geodatabase]. May 19, 2016.
Provincial Protected Areas - Wildlife Management Areas - Acquisition, Lease, and Transfer of Administration and Control Lands	BCGOV FLNRO GeoBC. Conservation Lands. [ESRI File Geodatabase]. May 19, 2016.
National Protected Areas - National Parks	CDNGOV Natural Resources Canada. National Parks - National Framework Canada Lands Administrative Boundaries Level 1. [ESRI File Geodatabase]. May 19, 2016.
National Protected Areas - National Wildlife Areas and other National Protected Areas	Environment Canada (Canadian Wildlife Service). CWS Protected Areas. [ESRI Shapefile]. June 2012.
Region Boundaries	BCGOV ENV Knowledge Management Branch. ENV Regional Boundaries. [ESRI Shapefile]. June 07, 2012.
Lakes and Rivers	DataBC Geographic Services. Hillshade Imagery [WMS].
Multidirectional Hillshade Basemap	Sources: Esri, USGS, NGA, NASA, CGIAR, N Robinson, NCEAS, NLS, OS, NMA, Geodatasystem, Rijkswaterstaat, GSA, Geoland, FEMA, Intermap and the GIS user community. [ESRI Map Service].
1:50,000 DEM Basemap	CDNGOV Natural Resources Canada. Canada digital elevation data (1:50,000). [ESRI File Geodatabase]. 1997-1999.
Canada & USA Basemaps	CDNGOV Natural Resources Canada. Atlas of Canada National Scale Data 1:1,000,000. [ESRI Geodatabase]. 2015.



British Columbia Conservation Areas: Kootenay

Non-governmental Organization Conservation Areas

- Fee Simple
- Covenants and Other Registered Interests on Title
- Agreements and Other Unregistered Interests Not on Title*

Provincial Protected Areas

- Provincial Parks, Ecological Reserves, Recreation Areas, Protected Areas, and Conservancies
- Wildlife Management Areas
- Ministry of Forests, Lands and Natural Resource Operations Acquisition, Lease, and Transfer of Administration and Control Lands

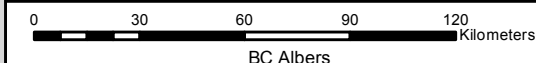
National Protected Areas

- National Parks
- National Wildlife Areas and other National Protected Areas
- Highways

Points represent conservation areas that are less than 500 hectares; polygons represent those that are greater than 500 hectares.

Some points may be obscured by overlying points.

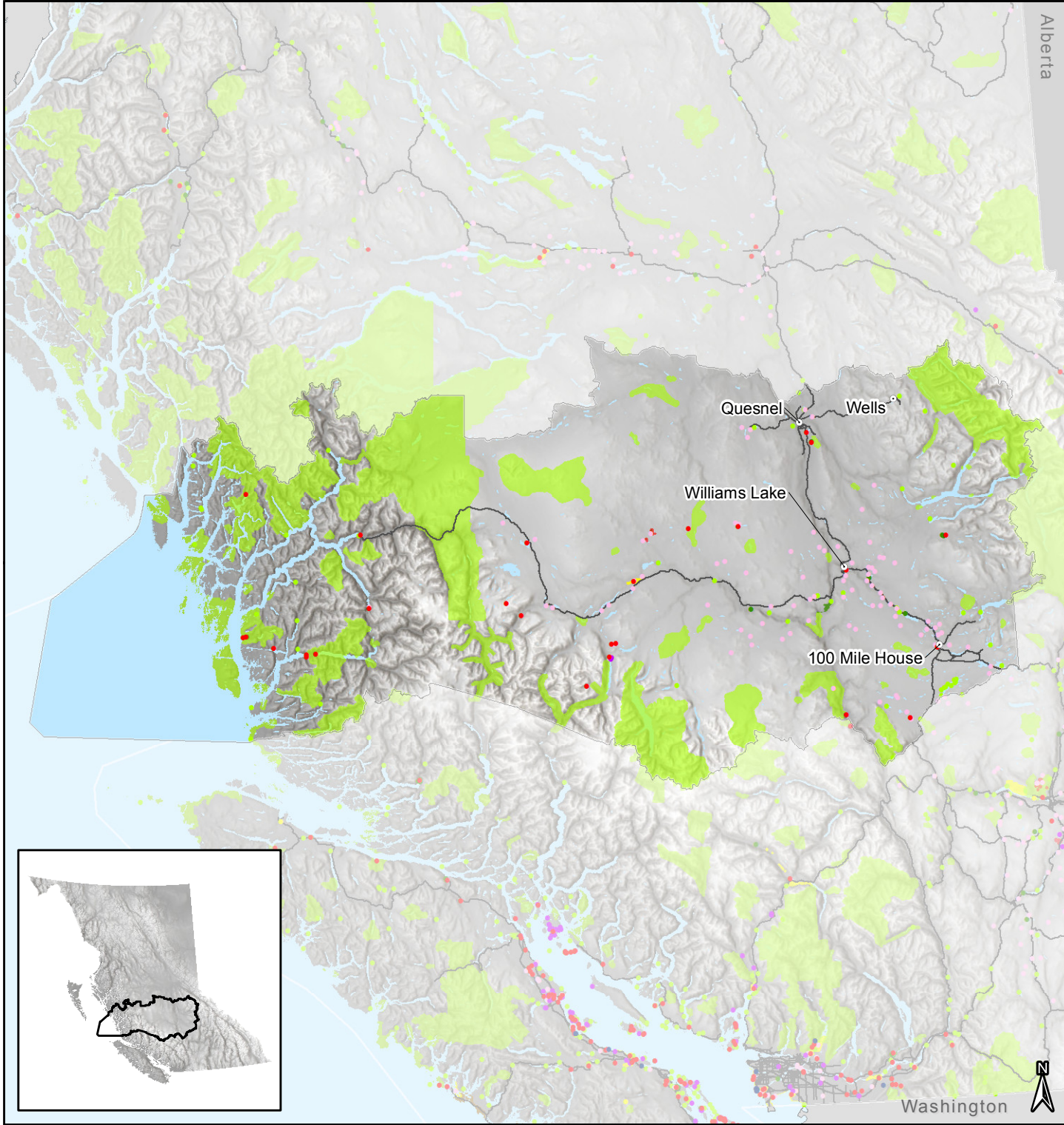
*Accuracy of some conservation areas has not yet been quality assured by respective securement organizations.



BC NGO Conservation Areas Database Technical Working Group:



Layer	Source
Non-governmental Organization Conservation Areas	British Columbia NGO Conservation Areas Database Technical Working Group, 2016. BC NGO Conservation Areas Database - Fee Simple, Registerable Interests, and Unregisterable Interests (secured as of Dec 31, 2015). [ESRI Personal Geodatabase]. Last updated Jul 19, 2016.
Provincial Protected Areas - Provincial Parks, Ecological Reserves, Recreation Areas, and Protected Areas	BCGOV FLNRO GeoBC. TANTALIS - BC Parks, Ecological Reserves, and Protected Areas. [ESRI File Geodatabase]. May 19, 2016.
Provincial Protected Areas - Conservancies	BCGOV FLNRO GeoBC. TANTALIS - Conservancy Areas. [ESRI File Geodatabase]. May 19, 2016.
Provincial Protected Areas - Wildlife Management Areas - Acquisition, Lease, and Transfer of Administration and Control Lands	BCGOV FLNRO GeoBC. Conservation Lands. [ESRI File Geodatabase]. May 19, 2016.
National Protected Areas - National Parks	CDNGOV Natural Resources Canada. National Parks - National Framework Canada Lands Administrative Boundaries Level 1. [ESRI File Geodatabase]. May 19, 2016.
National Protected Areas - National Wildlife Areas and other National Protected Areas	Environment Canada (Canadian Wildlife Service). CWS Protected Areas. [ESRI Shapefile]. June 2012.
Region Boundaries	BCGOV ENV Knowledge Management Branch. ENV Regional Boundaries. [ESRI Shapefile]. June 07, 2012.
Lakes and Rivers	DataBC Geographic Services. Hillshade Imagery [WMS].
Multidirectional Hillshade Basemap	Sources: Esri, USGS, NGA, NASA, CGIAR, N Robinson, NCEAS, NLS, OS, NMA, Geodatasystem, Rijkswaterstaat, GSA, Geoland, FEMA, Intermap and the GIS user community. [ESRI Map Service].
1:50,000 DEM Basemap	CDNGOV Natural Resources Canada. Canada digital elevation data (1:50,000). [ESRI File Geodatabase]. 1997-1999.
Canada & USA Basemaps	CDNGOV Natural Resources Canada. Atlas of Canada National Scale Data 1:1,000,000. [ESRI Geodatabase]. 2015.



British Columbia Conservation Areas: Cariboo

Non-governmental Organization Conservation Areas

- Fee Simple
- Covenants and Other Registered Interests on Title
- Agreements and Other Unregistered Interests Not on Title*

Provincial Protected Areas

- Provincial Parks, Ecological Reserves, Recreation Areas, Protected Areas, and Conservancies
- Wildlife Management Areas
- Ministry of Forests, Lands and Natural Resource Operations Acquisition, Lease, and Transfer of Administration and Control Lands

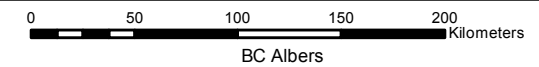
National Protected Areas

- National Parks
- National Wildlife Areas and other National Protected Areas
- Highways

Points represent conservation areas that are less than 500 hectares; polygons represent those that are greater than 500 hectares.

Some points may be obscured by overlying points.

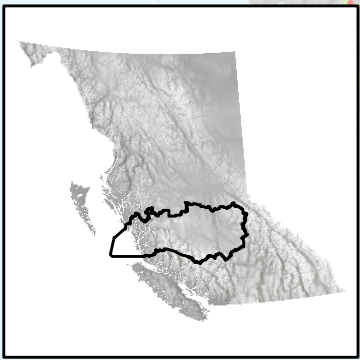
*Accuracy of some conservation areas has not yet been quality assured by respective securement organizations.

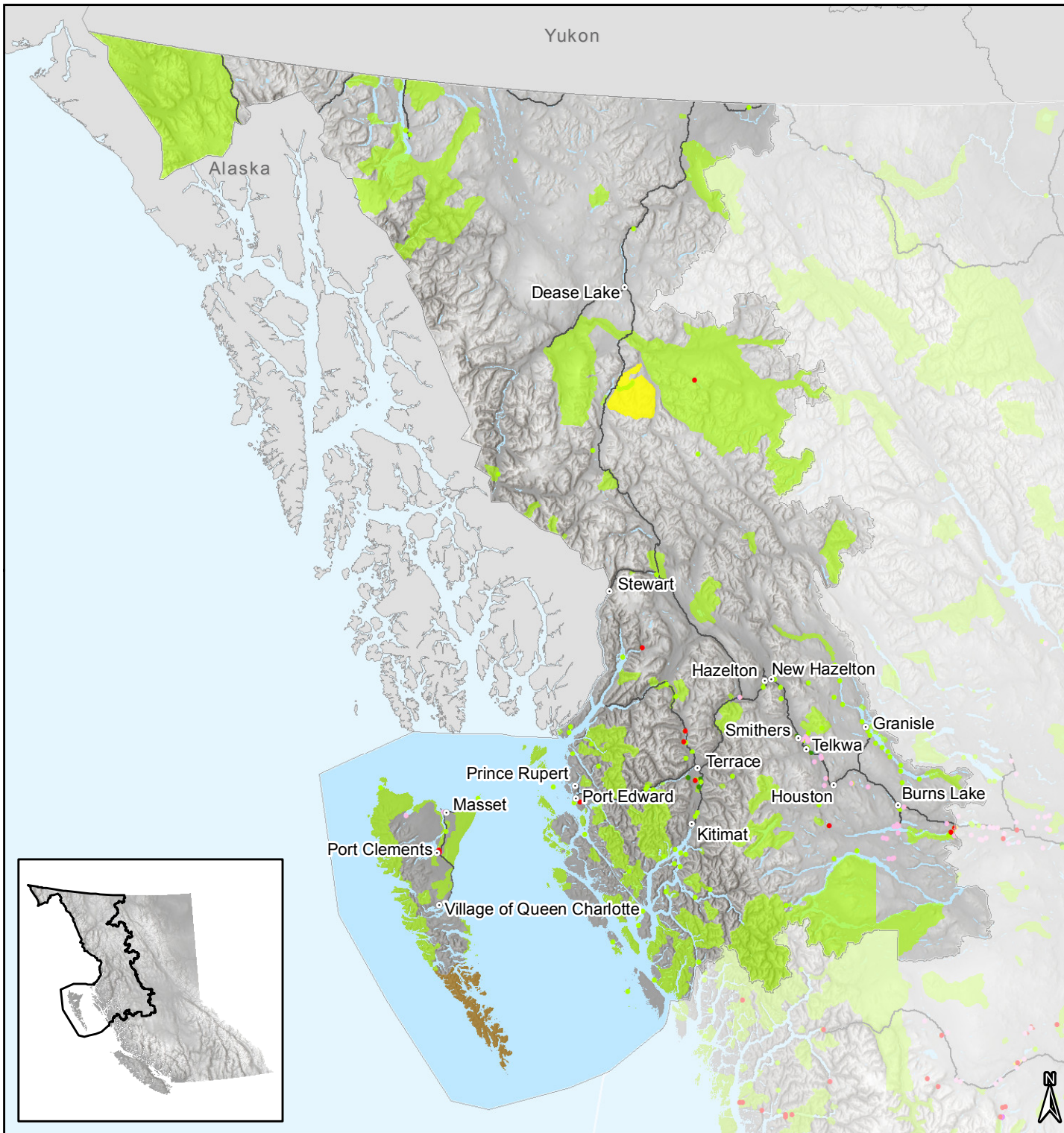


BC NGO Conservation Areas Database Technical Working Group:



Layer	Source
Non-governmental Organization Conservation Areas	British Columbia NGO Conservation Areas Database Technical Working Group, 2016; BC NGO Conservation Areas Database - Fee Simple, Registerable Interests, and Unregisterable Interests (secured as of Dec 31, 2015). [ESRI Personal Geodatabase]. Last updated Jul 19, 2016.
Provincial Protected Areas - Provincial Parks, Ecological Reserves, Recreation Areas, and Protected Areas	BCGOV FLNRO GeoBC. TANTALIS - BC Parks, Ecological Reserves, and Protected Areas. [ESRI File Geodatabase]. May 19, 2016.
Provincial Protected Areas - Conservancies	BCGOV FLNRO GeoBC. TANTALIS - Conservancy Areas. [ESRI File Geodatabase]. May 19, 2016.
Provincial Protected Areas - Wildlife Management Areas - Acquisition, Lease, and Transfer of Administration and Control Lands	BCGOV FLNRO GeoBC. Conservation Lands. [ESRI File Geodatabase]. May 19, 2016.
National Protected Areas - National Parks	CDNGOV Natural Resources Canada. National Parks - National Framework Canada Lands Administrative Boundaries Level 1. [ESRI File Geodatabase]. May 19, 2016.
National Protected Areas - National Wildlife Areas and other National Protected Areas	Environment Canada (Canadian Wildlife Service). CWS Protected Boundaries. [ESRI Shapefile]. June 07, 2012.
Region Boundaries	BCGOV ENV Knowledge Management Branch. ENV Regional Boundaries. [ESRI Shapefile]. June 07, 2012.
Lakes and Rivers	DataBC Geographic Services. Hillshade Imagery [WMS].
Multidirectional Hillshade Basemap	Sources: Esri, USGS, NGA, NASA, CGIAR, N Robinson, NCEAS, NLS, OS, NMA, Geodatasteylen, Rijkswaterstaat, GSA, Geoland, FEMA, Intermap and the GIS user community. [ESRI Map Service].
1:50,000 DEM Basemap	CDNGOV Natural Resources Canada. Canada digital elevation data (1:50,000). [ESRI File Geodatabase]. 1997-1999.
Canada & USA Basemaps	CDNGOV Natural Resources Canada. Atlas of Canada National Scale Data 1:1,000,000. [ESRI Geodatabase]. 2015.





British Columbia Conservation Areas: Skeena

Non-governmental Organization Conservation Areas

- Fee Simple
- Covenants and Other Registered Interests on Title
- Agreements and Other Unregistered Interests Not on Title*

Provincial Protected Areas

- Provincial Parks, Ecological Reserves, Recreation Areas, Protected Areas, and Conservancies
- Wildlife Management Areas
- Ministry of Forests, Lands and Natural Resource Operations Acquisition, Lease, and Transfer of Administration and Control Lands

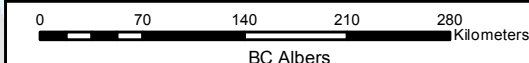
National Protected Areas

- National Parks
- National Wildlife Areas and other National Protected Areas
- Highways

Points represent conservation areas that are less than 500 hectares; polygons represent those that are greater than 500 hectares.

Some points may be obscured by overlying points.

*Accuracy of some conservation areas has not yet been quality assured by respective securement organizations.



BC NGO Conservation Areas Database Technical Working Group:



Layer	Source
Non-governmental Organization Conservation Areas	British Columbia NGO Conservation Areas Database Technical Working Group, 2016; BC NGO Conservation Areas Database - Fee Simple, Registerable Interests, and Unregisterable Interests (secured as of Dec 31, 2015). [ESRI Personal Geodatabase]. Last updated Jul 19, 2016.
Provincial Protected Areas - Provincial Parks, Ecological Reserves, Recreation Areas, and Protected Areas	BCGOV FLNRO GeoBC. TANTALIS - BC Parks, Ecological Reserves, and Protected Areas. [ESRI File Geodatabase]. May 19, 2016.
Provincial Protected Areas - Conservancies	BCGOV FLNRO GeoBC. TANTALIS - Conservancy Areas. [ESRI File Geodatabase]. May 19, 2016.
Provincial Protected Areas - Wildlife Management Areas	BCGOV FLNRO GeoBC. Conservation Lands. [ESRI File Geodatabase]. May 19, 2016.
National Protected Areas - National Parks	CDNGOV Natural Resources Canada. National Parks - National Framework Canada Lands Administrative Boundaries Level 1. [ESRI File Geodatabase]. May 19, 2016.
National Protected Areas - National Wildlife Areas and other National Protected Areas	Environment Canada (Canadian Wildlife Service). CWS Protected Areas. [ESRI Shapefile]. June 2012.
Region Boundaries	BCGOV ENV Knowledge Management Branch. ENV Regional Boundaries. [ESRI Shapefile]. June 07, 2012.
Lakes and Rivers	DataBC Geographic Services. Hillshade Imagery [WMS].
Multidirectional Hillshade Basemap	Sources: Esri, USGS, NGA, NASA, CGIAR, N Robinson, NCEAS, NLS, OS, NMA, Geodatasysteisen, Rijkswaterstaat, GSA, Geoland, FEMA, Intermap and the GIS user community. [ESRI Map Service].
1:50,000 DEM Basemap	CDNGOV Natural Resources Canada. Canada digital elevation data (1:50,000). [ESRI File Geodatabase]. 1997-1999.
Canada & USA Basemaps	CDNGOV Natural Resources Canada. Atlas of Canada National Scale Data 1:1,000,000. [ESRI Geodatabase]. 2015.

British Columbia Conservation Areas: Omineca

Non-governmental Organization Conservation Areas

- Fee Simple
- Covenants and Other Registered Interests on Title
- Agreements and Other Unregistered Interests Not on Title*

Provincial Protected Areas

- Provincial Parks, Ecological Reserves, Recreation Areas, Protected Areas, and Conservancies
- Wildlife Management Areas
- Ministry of Forests, Lands and Natural Resource Operations Acquisition, Lease, and Transfer of Administration and Control Lands

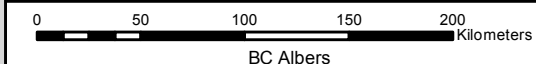
National Protected Areas

- National Parks
- National Wildlife Areas and other National Protected Areas
- Highways

Points represent conservation areas that are less than 500 hectares; polygons represent those that are greater than 500 hectares.

Some points may be obscured by overlying points.

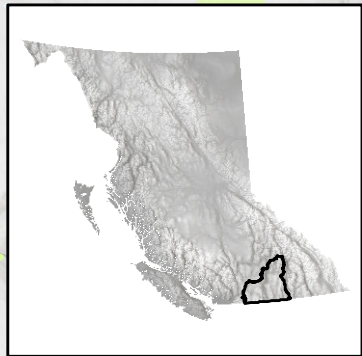
*Accuracy of some conservation areas has not yet been quality assured by respective securement organizations.



BC NGO Conservation Areas Database Technical Working Group:



Layer	Source
Non-governmental Organization Conservation Areas	British Columbia NGO Conservation Areas Database Technical Working Group, 2016. BC NGO Conservation Areas Database - Fee Simple, Registrable Interests, and Unregistrable Interests (secured as of Dec 31, 2015). [ESRI Personal Geodatabase]. Last updated Jul 19, 2016.
Provincial Protected Areas - Provincial Parks, Ecological Reserves, Recreation Areas, and Protected Areas	BCGOV FLNRO GeoBC. TANTALIS - BC Parks, Ecological Reserves, and Protected Areas. [ESRI File Geodatabase]. May 19, 2016.
Provincial Protected Areas - Conservancies	BCGOV FLNRO GeoBC. TANTALIS - Conservancy Areas. [ESRI File Geodatabase]. May 19, 2016.
Provincial Protected Areas - Wildlife Management Areas - Acquisition, Lease, and Transfer of Administration and Control Lands	BCGOV FLNRO GeoBC. Conservation Lands. [ESRI File Geodatabase]. May 19, 2016.
National Protected Areas - National Parks	CDNGOV Natural Resources Canada. National Parks - National Framework Canada Lands Administrative Boundaries Level 1. [ESRI File Geodatabase]. May 19, 2016.
National Protected Areas - National Wildlife Areas and other National Protected Areas	Environment Canada (Canadian Wildlife Service). CWS Protected Boundaries. [ESRI Shapefile]. June 07, 2012.
Region Boundaries	BCGOV ENV Knowledge Management Branch. ENV Regional Boundaries. [ESRI Shapefile]. June 07, 2012.
Lakes and Rivers	DataBC Geographic Services. Hillshade Imagery [WMS].
Multidirectional Hillshade Basemap	Sources: Esri, USGS, NGA, NASA, CGIAR, N Robinson, NCEAS, NLS, OS, NMA, Geodatasysteem, Rijkswaterstaat, GSA, Geoland, FEMA, Intermap and the GIS user community. [ESRI Map Service].
1:50,000 DEM Basemap	CDNGOV Natural Resources Canada. Canada digital elevation data (1:50,000). [ESRI File Geodatabase]. 1997-1999.
Canada & USA Basemaps	CDNGOV Natural Resources Canada. Atlas of Canada National Scale Data 1:1,000,000. [ESRI Geodatabase]. 2015.



British Columbia Conservation Areas: Okanagan

Non-governmental Organization Conservation Areas

- Fee Simple
- Covenants and Other Registered Interests on Title
- Agreements and Other Unregistered Interests Not on Title*

Provincial Protected Areas

- Provincial Parks, Ecological Reserves, Recreation Areas, Protected Areas, and Conservancies
- Wildlife Management Areas
- Ministry of Forests, Lands and Natural Resource Operations Acquisition, Lease, and Transfer of Administration and Control Lands

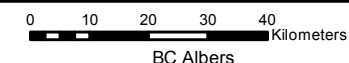
National Protected Areas

- National Parks
- National Wildlife Areas and other National Protected Areas
- Highways

Points represent conservation areas that are less than 500 hectares; polygons represent those that are greater than 500 hectares.

Some points may be obscured by overlying points.

*Accuracy of some conservation areas has not yet been quality assured by respective securement organizations.



BC NGO Conservation Areas Database Technical Working Group:



Layer	Source
Non-governmental Organization Conservation Areas	British Columbia NGO Conservation Areas Database Technical Working Group, 2016; BC NGO Conservation Areas Database - Fee Simple, Registerable Interests, and Unregisterable Interests (secured as of Dec 31, 2015). [ESRI Personal Geodatabase]. Last updated Jul 19, 2016.
Provincial Protected Areas - Provincial Parks, Ecological Reserves, Recreation Areas, and Protected Areas	BCGOV FLNRO GeoBC. TANTALIS - BC Parks, Ecological Reserves, and Protected Areas. [ESRI File Geodatabase]. May 19, 2016.
Provincial Protected Areas - Conservancies	BCGOV FLNRO GeoBC. TANTALIS - Conservancy Areas. [ESRI File Geodatabase]. May 19, 2016.
Provincial Protected Areas - Wildlife Management Areas - Acquisition, Lease, and Transfer of Administration and Control Lands	BCGOV FLNRO GeoBC. Conservation Lands. [ESRI File Geodatabase]. May 19, 2016.
National Protected Areas - National Parks	CDNGOV Natural Resources Canada. National Parks - National Framework Canada Lands Administrative Boundaries Level 1. [ESRI File Geodatabase]. May 19, 2016.
National Protected Areas - National Wildlife Areas and other National Protected Areas	Environment Canada (Canadian Wildlife Service). CWS Protected Areas. [ESRI Shapefile]. June 07, 2012.
Region Boundaries	BCGOV ENV Knowledge Management Branch. ENV Regional Boundaries. [ESRI Shapefile]. June 07, 2012.
Lakes and Rivers	DataBC Geographic Services. Hillshade Imagery [WMS].
Multidirectional Hillshade Basemap	Sources: Esri, USGS, NGA, NASA, CGIAR, N Robinson, NCEAS, NLS, OS, NMA, Geodatasystem, Rijkswaterstaat, GSA, Geoland, FEMA, Intermap and the GIS user community. [ESRI Map Service].
1:50,000 DEM Basemap	CDNGOV Natural Resources Canada. Canada digital elevation data (1:50,000). [ESRI File Geodatabase]. 1997-1999.
Canada & USA Basemaps	CDNGOV Natural Resources Canada. Atlas of Canada National Scale Data 1:1,000,000. [ESRI Geodatabase]. 2015.

Washington



Yukon

Northwest Territories

Alberta

British Columbia Conservation Areas: Peace

Non-governmental Organization Conservation Areas

- Fee Simple
- Covenants and Other Registered Interests on Title
- Agreements and Other Unregistered Interests Not on Title*

Provincial Protected Areas

- Provincial Parks, Ecological Reserves, Recreation Areas, Protected Areas, and Conservancies
- Wildlife Management Areas
- Ministry of Forests, Lands and Natural Resource Operations Acquisition, Lease, and Transfer of Administration and Control Lands

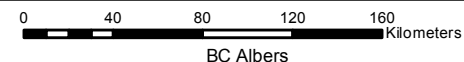
National Protected Areas

- National Parks
- National Wildlife Areas and other National Protected Areas
- Highways

Points represent conservation areas that are less than 500 hectares; polygons represent those that are greater than 500 hectares.

Some points may be obscured by overlying points.

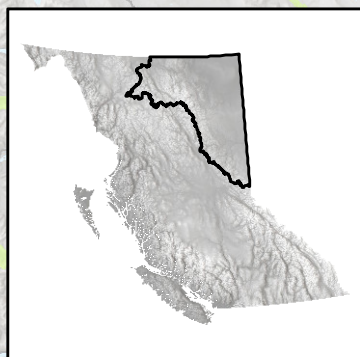
*Accuracy of some conservation areas has not yet been quality assured by respective securement organizations.



BC NGO Conservation Areas Database Technical Working Group:



Layer	Source
Non-governmental Organization Conservation Areas	British Columbia NGO Conservation Areas Database Technical Working Group, 2016; BC NGO Conservation Areas Database - Fee Simple, Registerable Interests, and Unregisterable Interests (secured as of Dec 31, 2015). [ESRI Personal Geodatabase]. Last updated Jul 19, 2016.
Provincial Protected Areas - Provincial Parks, Ecological Reserves, Recreation Areas, and Protected Areas	BCGOV FLNRO GeoBC. TANTALIS - BC Parks, Ecological Reserves, and Protected Areas. [ESRI File Geodatabase]. May 19, 2016.
Provincial Protected Areas - Conservancies	BCGOV FLNRO GeoBC. TANTALIS - Conservancy Areas. [ESRI File Geodatabase]. May 19, 2016.
Provincial Protected Areas - Wildlife Management Areas - Acquisition, Lease, and Transfer of Administration and Control Lands	BCGOV FLNRO GeoBC. Conservation Lands. [ESRI File Geodatabase]. May 19, 2016.
National Protected Areas - National Parks	CDNGOV Natural Resources Canada. National Parks - National Framework Canada Lands Administrative Boundaries Level 1. [ESRI File Geodatabase]. May 19, 2016.
National Protected Areas - National Wildlife Areas and other National Protected Areas	Environment Canada (Canadian Wildlife Service). CWS Protected Areas. [ESRI Shapefile]. June 2012.
Region Boundaries	BCGOV ENV Knowledge Management Branch. ENV Regional Boundaries. [ESRI Shapefile]. June 07, 2012.
Lakes and Rivers	DataBC Geographic Services. Hillshade Imagery [WMS].
Multidirectional Hillshade Basemap	Sources: Esri, USGS, NGA, NASA, CGIAR, N Robinson, NCEAS, NLS, OS, NMA, Geodatasysteisen, Rijkswaterstaat, GSA, Geoland, FEMA, Intermap and the GIS user community. [ESRI Map Service].
1:50,000 DEM Basemap	CDNGOV Natural Resources Canada. Canada digital elevation data (1:50,000). [ESRI File Geodatabase]. 1997-1999.
Canada & USA Basemaps	CDNGOV Natural Resources Canada. Atlas of Canada National Scale Data 1:1,000,000. [ESRI Geodatabase]. 2015.



Conservation Area by NGO Securement Organization				
Securement Organization	Conservation Area Subtype			Total (ha)
	Fee Simple (ha)	Covenants and Other Registered Interests on Title (ha)	Agreements and Other Unregistered Interests Not on Title (ha)*	
American Friends of Canadian Land Trusts		5.8		5.8
Bowen Island Conservancy		1.7		1.7
Brown Property Preservation Society		18.9		18.9
Burrowing Owl Conservation Society of B.C.	2.4			2.4
Central Okanagan Land Trust	327.5	51.0		378.5
Comox Strathcona Natural History Society		4.3		4.3
Comox Valley Land Trust		110.5		110.5
Conservancy Hornby Island		23.5		23.5
Cowichan Community Land Trust		122.5		122.5
Denman Conservancy Association	122.3	196.2		318.5
Ducks Unlimited Canada	10,342.6	374.8	146,535.9	157,253.3
Fraser Valley Conservancy	11.5	0.4		11.9
Gabriola Historical and Museum Society		0.2		0.2
Gabriola Land and Trails Trust		65.2		65.2
Galiano Conservancy Association	192.6	216.2		408.8
Gambier Island Conservancy		149.1		149.1
Garry Oak Meadow Preservation Society		8.4		8.4
Habitat Acquisition Trust	1.0	1,728.5		1,729.5
Islands Trust Fund Board	621.3	570.4		1,191.6
Kootenay Land Trust Society		63.7		63.7
Lasqueti Island Nature Conservancy		57.6		57.6
Mayne Island Conservancy Society		0.5		0.5
Nanaimo & Area Land Trust	9.0	184.2		193.2
Nature Conservancy of Canada	74,675.1	12,127.3	214.3	87,016.6
North Okanagan Parks and Natural Area Trust		6.4		6.4
Quadra Island Conservancy and Stewardship Society	23.0	127.3		150.4
Rosewall-Bonnel Land Trust Society		1.0		1.0
Salt Spring Island Conservancy	278.4	316.3		594.6
Salt Spring Island Water Preservation Society	210.7	43.5		254.2
Savary Island Land Trust Society	18.9			18.9
South Okanagan Rehabilitation Centre for Owls	2.4			2.4
Southern Interior Land Trust Society	43.1			43.1
Sunshine Coast Conservation Association		149.1		149.1
The Galiano Club	345.4			345.4
The Land Conservancy of BC	2,115.3	5,240.8	1.7	7,357.9
The Nature Trust of British Columbia	21,587.8	1,714.3		23,302.1
Turtle Island Earth Stewards Society	0.6	382.9		383.5
Wild Bird Trust		0.3		0.3
Total Area**	103,931.1	20,809.3	146,751.9	159,424.4
<p>As there can be more than one Conservation Area Subtype with interest in a conservation area, summing the area values for all Conservation Area Subtypes would lead to an overvaluation in the total conserved area. The "Total Area" removes the overvaluation and reflects the true conserved area.</p> <p>*The area value contains some uncertainty. It is sourced directly from respective securement organizations, Ducks Unlimited Canada and the Nature Conservancy of Canada.</p> <p>**Total Area may change as uncertainty is reduced for Agreements and Other Unregistered Interests Not on Title.</p> <p><u>Data Recognition:</u> British Columbia NGO Conservation Areas Technical Working Group. 2016. BC NGO Conservation Areas Database – Fee Simple, Registerable Interests, and Unregisterable Interests (secured as of December 31, 2015). Digital data files. Last updated July 19, 2016.</p>				